

MaxSea Time Zero v 1.9

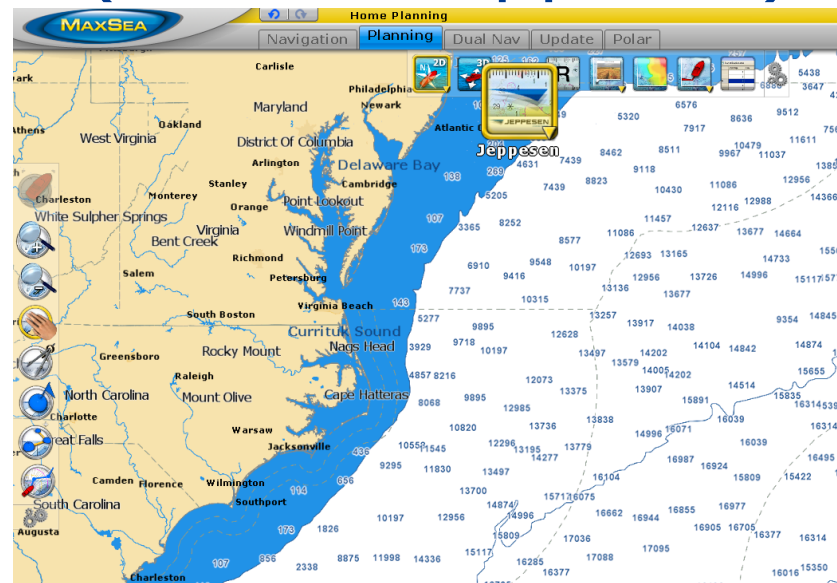
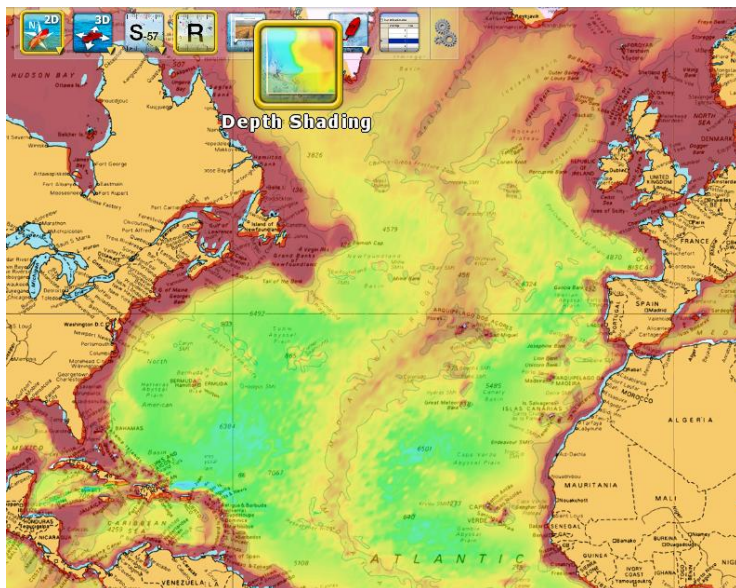
New Features



MAXSEA

New DVD Installer

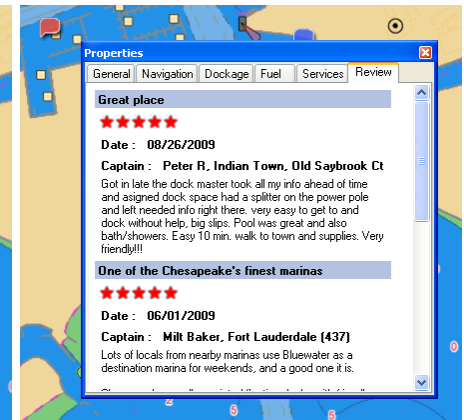
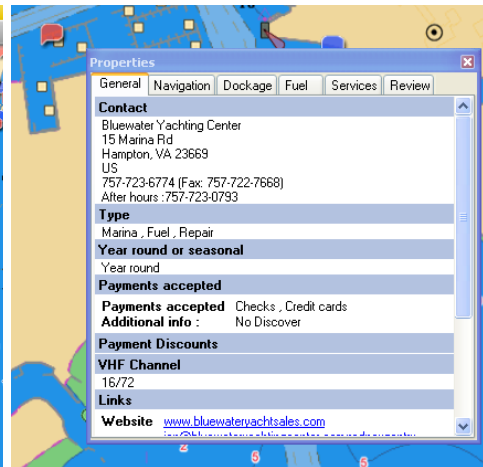
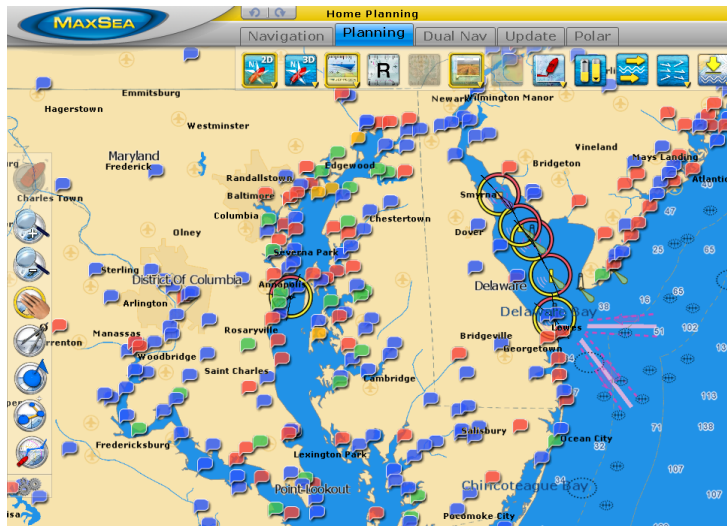
- Time Zero V1.9 will now ship on a DVD
- The DVD contains the program software and World Base Charts (3D and Jeppesen)



- For Internet download, a “light” installer will be available (containing only the software)

New: Integration with ActiveCaptain

- Time Zero 1.9 embeds the ActiveCaptain database allowing access to over 10,000 Points of Interests (Marinas, Anchorage,...)



- Registering as an "ActiveCaptain" User (free registration) will additionally allow access to Marina Reviews and Real Time POI Updates

New: Compatible with AXIS IP Cameras

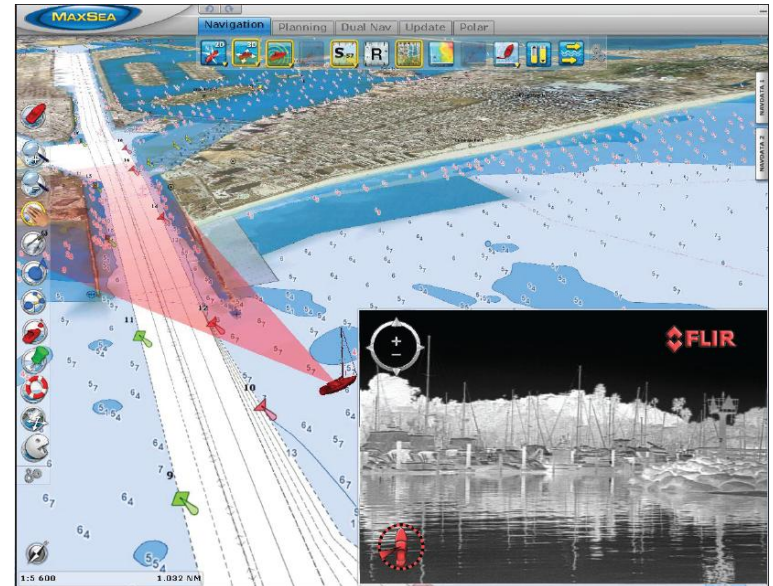
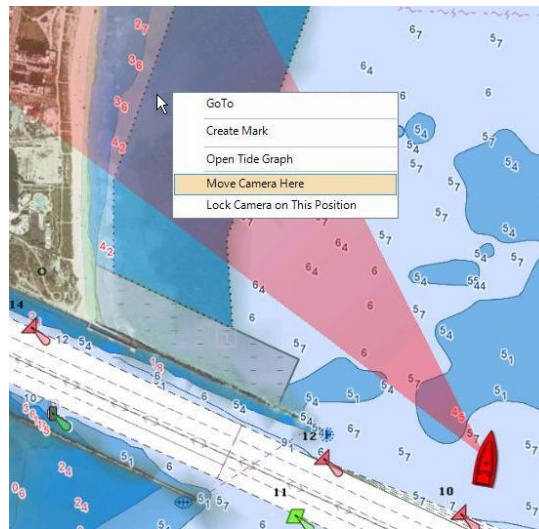
- AXIS IP Cameras (or AXIS Video Servers) can be connected to the computer (via Ethernet) and displayed in MaxSea TZ Explorer



- Display the Camera in a NavData window or in its own window over the chart

New: FLIR M-Series Control

- MaxSea TimeZero Explorer can control FLIR M-Series Thermal Cameras



- Pan/Tilt the camera manually or lock on an Object or ARPA Target directly from the chart
- Use an Axis Video server (optional) to bring the video in MaxSea

New: Furuno 2XX7 Radar Compatibility

- MaxSea TimeZero Explorer is directly compatible with the Furuno 2XX7 series Radar



New: Compatible with MM3D C-Map by Jeppesen Charts

- Mapmedia will be introducing new MM3D charts based upon the Jeppesen (C-MAP) data. Time Zero v1.9 allows the user to switch back and forth between any installed vector charts (Navionics, S57, Jeppesen)



Misc. Improvements:

- Vector chart rendering has been improved (for Jeppesen, Navionics or HO-S57 vector charts)
- The Auto Config process in the Configuration Wizard has been improved
- AIS Targets are interpolated every few seconds
- The Manual Mark Input Window (input by Lat/Long) has been improved to accept multiple formats
- TD offsets are now available
- Tidal Current Arrows change size dynamically
- New Pop-up information on Waypoint (allows user to quickly access TTG, ETA and CTS directly from the chart)



Major Bug Fixes

- Fixed: NavNet3D alarms when MaxSea TimeZero Explorer is started
- Tides Window (now appears in local time)
- Improved: NavNet3D Route and Mark shared over the network

Known Issues

- “mscorwks” crash on some systems (after running MaxSea TZ Explorer for a long time on network with two Radar Antennas)

Note: This crash is rare and does not occur on MaxSea TimeZero Navigator. This issue is under investigation.

- Crash when the Connection Wizard is launched after a USB to serial adapter is removed (while MaxSea was open)

Note: If a Serial to USB adapter is removed, you should restart MaxSea before retrying to launch the Connection Wizard

How to update?

- The Time Zero v1.9 Update is free for all MaxSea TimeZero Customers!
- Simply request a v1.9 DVD or download the full or light version from the www.maxsea.com website (login to "My MaxSea -> Download")



Title	Description	Category	Download
MaxSea Time Zero	Full Version de MaxSea Time Zero v1.9 Size : 551 MB	Full Version	Download