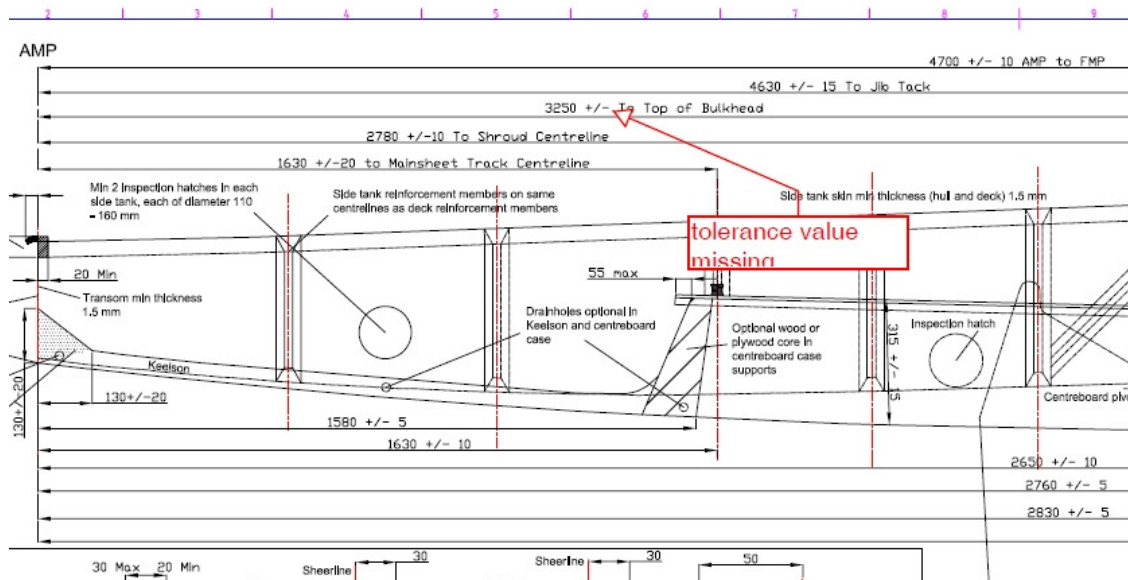


INTERNATIONAL 470 CLASS ASSOCIATION



The following amendments to the Building Specification / Class Rules have been approved by the Class Rules Sub-committee to be effective 8th February 2013.

Insert the missing tolerance as on the original building specification of ± 30 mm as shown below



Secretariat Note to Builders:

In the builder license agreement with ISAF it states "Any proposed change to the production tooling, hull characteristics or layout, method of construction, material or specification shall be submitted to ISAF for approval." Therefore if you are proposing any changes please contact the ISAF Technical Department (technical@isaf.co.uk)