



EasyRoll® sailmakers instructions



Luff-tape attachment

The existing luff of the mainsail has to be changed to a 5 mm ext. luff-tape.

In case of sliders at the luff:

Remove the existing sliders. Beware: save these sliders, because they will be attached to the plastic mast profile by means of the snap-in-shackles (anti-jamming type Bainbridge model A028).

Cut off the luff from the sail so that the small pressed-in eyes for slider-attachment come off also.

In case of luffrope:

Cut off the rope. Look for a suitable slider that fits in the mast groove. These will be attached to the plastic mast profile by means of the snap-in-shackles (anti-jamming type Bainbridge model A028).

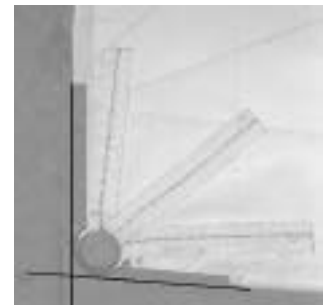
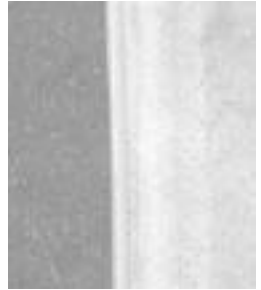
In general:

Remove the pressed-in reefing eyes in the luff; fill the "deep" holes with some layers of sailcloth. The reefing eyes in the leech may remain.

Stitch the 5 mm luff-tape to the prepared luff; start at approx. 10 cm above the tack and stop approx. 5 cm below the headboard. Take care that the rope of the luff-tape ends **before** the frontside of the headboard. The headboard has no luff tape.

Alternating the tack-nockback

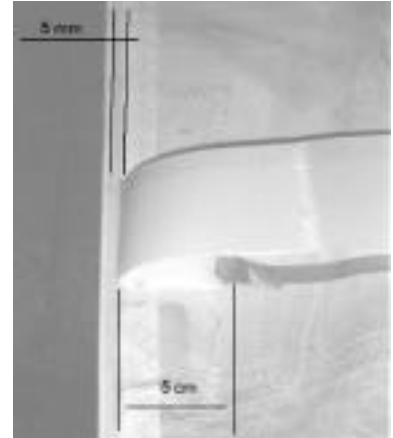
Cut out the existing tack-eye; replace it by a stainless steel ring with a diameter off 25 mm that you attach with a couple of webbingtapes to the reinforcement. Beware the the ring is place exactly vertical below the lufftape.



Installation of reefingbattenpockets

Stitch a battenpocket parallel to the foot. Use a strip of Dacron with a weight of 200-250 gram/m² and a width of 6-7 cm that you double at the luffside over a length of 15 cm. Place the strip of the pocket so that the luff- & leech side ends in the existing (reef)reinforcements on the sail. Double again the luff end strip over 5 cm and then stitch the strip on to the sail. **Make sure that the distance between the frontside of the battenpocketstrip and the lufftape is 5 mm !!**

The rear-end of the battenpocket will be closable with velcro. Therefore you stitch before installation already a 15 cm long and approx.4 cm wide strip of **velcro-loop** to the batten-pocket-strip. On the sail you stitch a 10 cm long and approx.4 cm wide strip of **velcro-hook** placed so that it will fall under the battenpocket-strip end. So the velcro-closure is at the inside of the pocket.



Beware that the batten in the pocket needs no tension !!