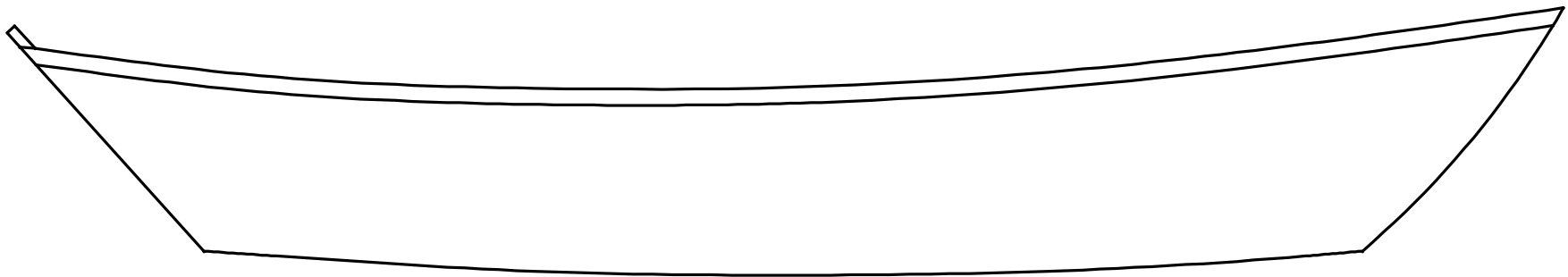
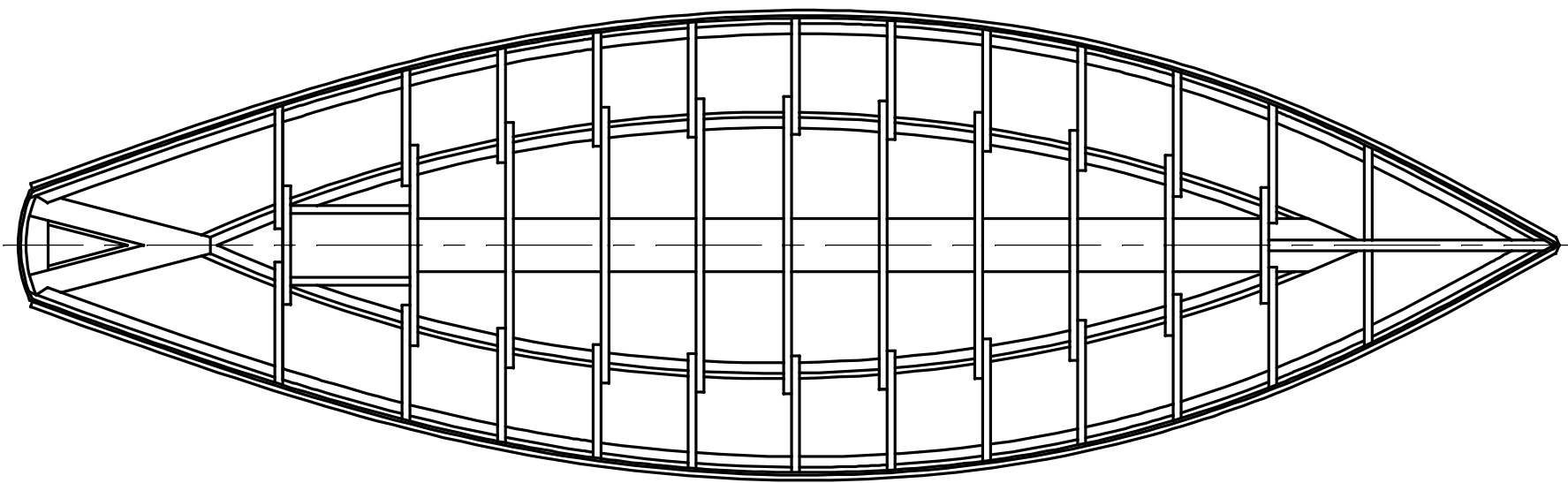


NOTICE  
 THIS DRAWING CONTAINS A PROPRIETARY DESIGN ASSIGNED TO SPIRA INTERNATIONAL, INC. ALL RIGHTS TO DUPLICATE, TRANSFER OR SELL THIS DESIGN ARE EXPRESSLY RESERVED. THE BUYER IS LICENSED TO BUILD ONE ASSEMBLY FROM THESE PLANS.

REVISIONS				
ZONE	LTR	DESCRIPTION	DATE	APPROVED
	A	UPDATED TO NEW FORMAT	09/19/08	JJS

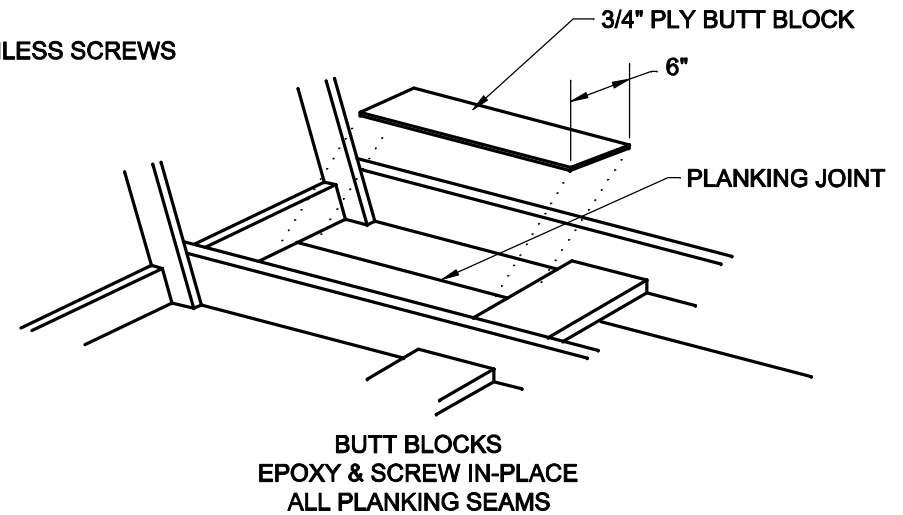
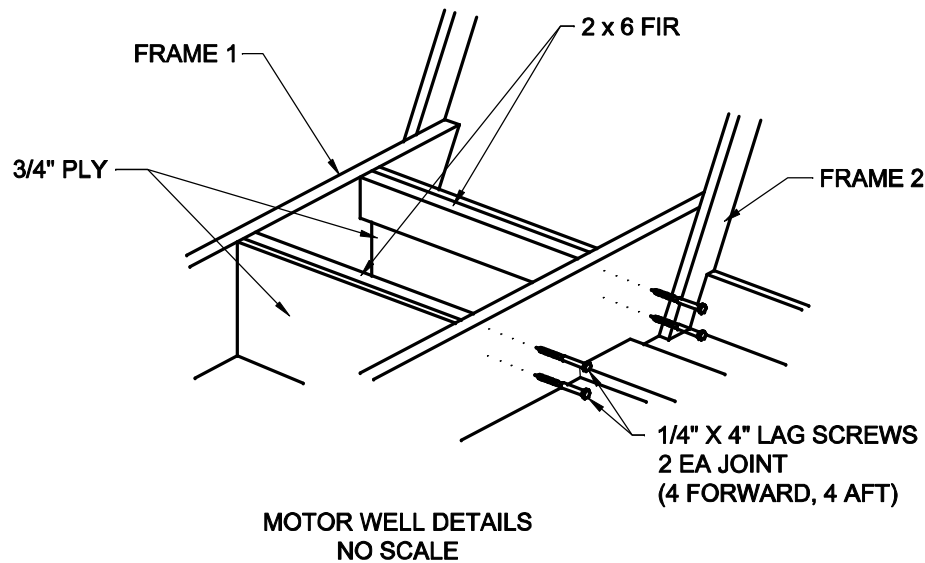
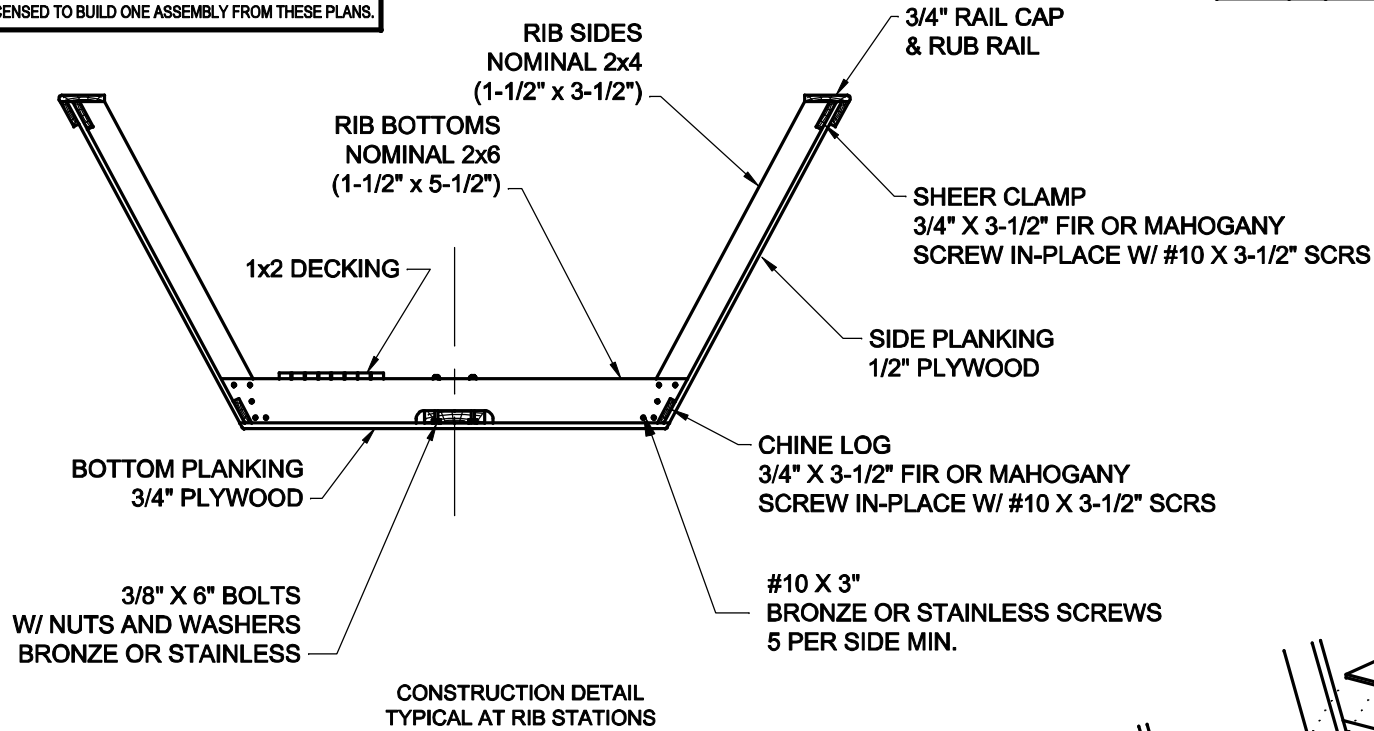


SPECIFICATIONS
LENGTH OVERALL - 24' 2"
BEAM OVERALL - 7' 6"
MAXIMUM DRAFT - 6"
HEIGHT AT BOW - 3' 9"
MINIMUM FREEBOARD - 2' 10"

<b><i>Spira International, Inc.</i></b> <i>Huntington Beach, California</i>			
<b>LABRADOR GRAND BANKS DORY</b>			
<b>DRAWN BY:</b> JJS		<b>DATE:</b> 06/23/04	<b>DRAWING NO.</b> LABR01
<b>SCALE</b> 3/4" = 1'		<b>SHEET</b>	<b>OF</b>

NOTICE  
THIS DRAWING CONTAINS A PROPRIETARY DESIGN ASSIGNED TO SPIRA INTERNATIONAL, INC. ALL RIGHTS TO DUPLICATE, TRANSFER OR SELL THIS DESIGN ARE EXPRESSLY RESERVED. THE BUYER IS LICENSED TO BUILD ONE ASSEMBLY FROM THESE PLANS.

REVISIONS				
ZONE	LTR	DESCRIPTION	DATE	APPROVED
	A	UPDATED TO NEW FORMAT	09/19/08	JJS



**Spira International, Inc.**  
Huntington Beach, California

LABRADOR GRAND BANKS DORY  
FRAMING DETAILS

DRAWN BY: JJS	DATE: 06/23/04	DRAWING NO. LABR04
SCALE 1" = 1'	SHEET OF	